

local strategic partnership in a deprived area

The local strategic partnership (LSP) brings together at a local level in an area of Norfolk the different parts of the public sector as well as the business, community and voluntary sectors. The partnership exists to encourage the partners to work together to achieve more, particularly by improving the way that different initiatives and services are coordinated.

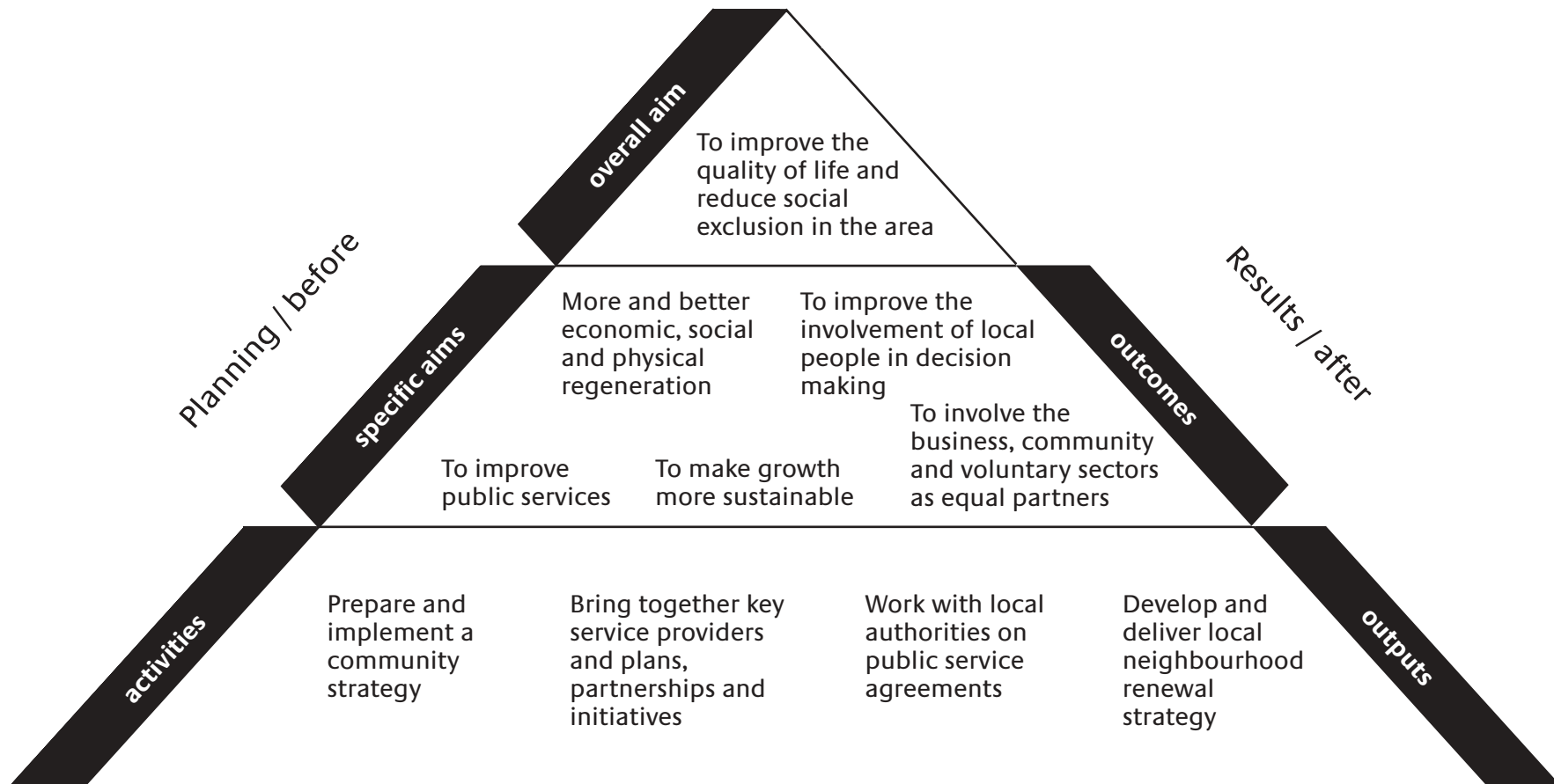
The LSP has four main aims:

- to tackle deprivation and social exclusion
- to promote regeneration
- to deliver public services in ways that meet people's needs
- to encourage local people to influence decision making and take action to improve their neighbourhoods.

The LSP:

- prepares and implements a community strategy for the area
- brings together local plans, partnerships and initiatives to provide a forum through which mainstream public service providers work effectively together to meet local needs and priorities
- helps the local authority develop public service agreements
- develops and delivers a local neighbourhood renewal strategy.

LSP in a deprived area



LSP in a deprived area

Outcomes

Specific aims	Outcomes
More and better economic, social and physical regeneration	<ul style="list-style-type: none"> • More and better: <ul style="list-style-type: none"> • Economic regeneration • Social regeneration • Physical regeneration
To make growth more sustainable	<ul style="list-style-type: none"> • New and expanded initiatives continue to develop beyond the funding period • More new organisations (private and voluntary) last longer than 18 months
To improve public services	<ul style="list-style-type: none"> • Health, police, local authority and other local services better meet local needs
To improve the involvement of local people in decision making	<ul style="list-style-type: none"> • Meaningful involvement by local people in the LSP • Local people actively involved in new projects and initiatives for regeneration
To involve the business, community and voluntary sectors as equal partners	<ul style="list-style-type: none"> • Business, community and voluntary sectors play a full and equal part in the work of the LSP

Note: The participation of local people, local businesses, community groups and the voluntary sector within the LSP is taken as an outcome in this context, since a specific aim of the LSP is to change from a situation of no/little participation to one of full and equal participation. This is a change and therefore an aim and outcome, at least for a development period.

LSP in a deprived area

Outcomes and indicators

Outcomes	Indicators
More and better physical regeneration	<ul style="list-style-type: none"> • Amount of graffiti and rubbish dumping in local green spaces • Number of derelict buildings rehabilitated
New and expanded initiatives continue and develop beyond the funding period	<ul style="list-style-type: none"> • Amount of mainstream Council funding for new local initiatives • Level of income generation by local projects
Health services better meet local needs	<ul style="list-style-type: none"> • Extent of translation and interpretation services in local languages • Extent to which health services are delivered within community settings
Meaningful involvement by local people in the LSP	<ul style="list-style-type: none"> • Profile of representatives on LSP • Amount of participation in decision making • Extent to which suggestions from local people are taken up
Businesses play a full and equal part in the work of the LSP	<ul style="list-style-type: none"> • Extent of business representation on LSP • Level of participation by local businesses